

# TECH

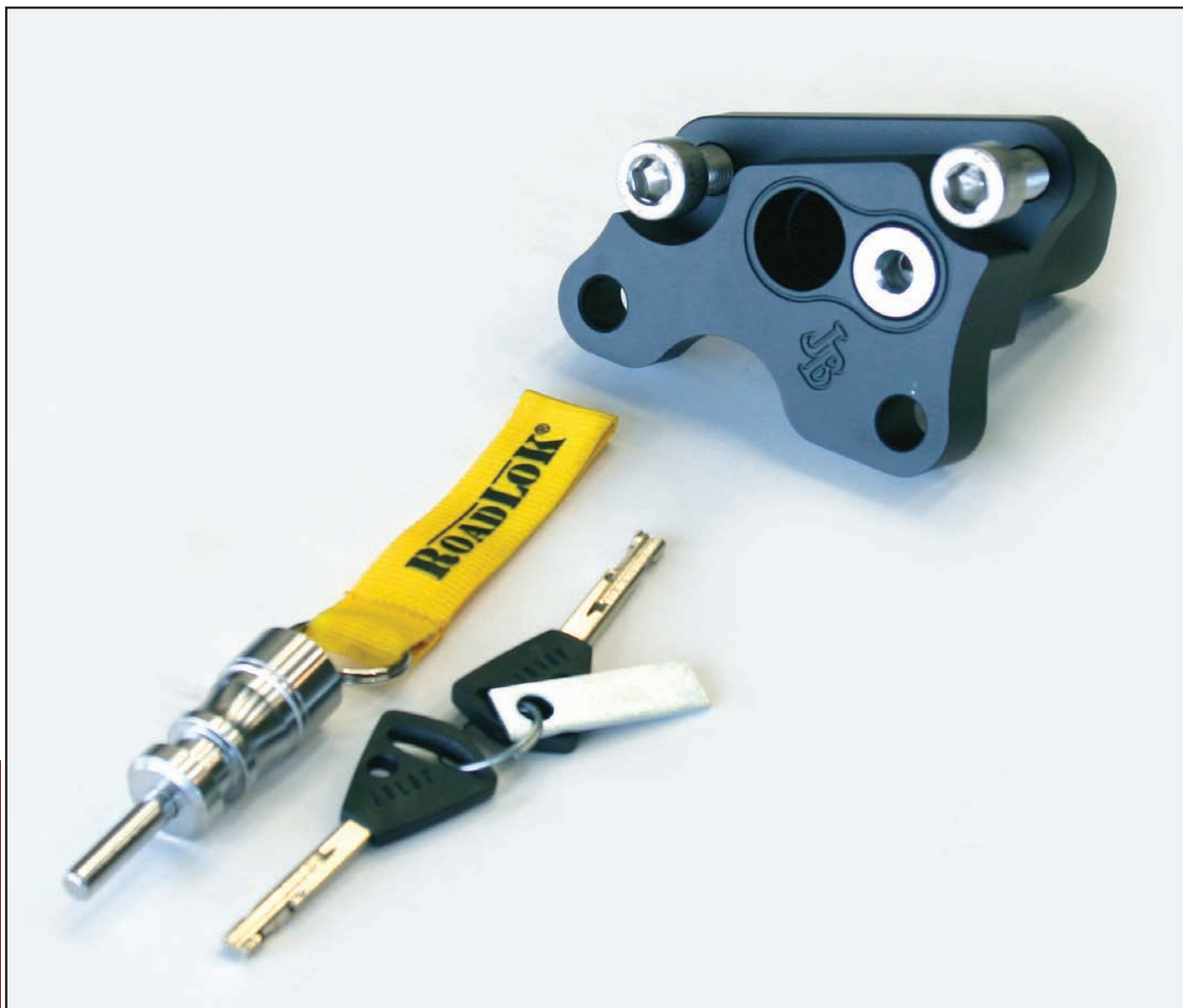
## Jaybrake & RoadLoK

Defender RoadLoK

Staff Report - Photos By Buck Lovell

With the number of motorcycles stolen every year steadily increasing, you can never have too many locks. Motorcycle brake-rotor locks have been around for quite awhile. In the past, the rotor lock was simply fastened onto the brake rotor or disc. Many times a rider would forget that the old-style rotor lock was on the rotor. If the lock had been placed behind the caliper, the rotor would rotate, and the bike could move as much as 18 inches before the rotor lock would stop the bike from moving, causing the bike and rider to topple over. I've seen it happen, and it ain't pretty. Aside from being embarrassing, trying to ride away with the old-style rotor lock in place can be downright dangerous.

Jaybrake and RoadLoK have teamed up to bring us a better, modern rotor lock — the Defender RoadLoK system. It allows zero wheel movement when locked. The lock pin also has a bright yellow flag attached to it to notify the rider that the pin is in place. Why didn't I think of that? Watch us install the Jaybrake-RoadLoK Defender RoadLoK on a late model Softail.



This is the Defender RoadLoK caliper locking device that will be installed on a 2007 Harley-Davidson® Softail motorcycle. If it can't be rolled, it's a heck of lot harder to steal. All hardware is included.



1 This is the stock caliper setup on the 2007 Softail.



2 Dismount the brake caliper.



3 Install the Jaybrake Defender RoadLoK unit into the caliper mount holes on the lower leg.



4 Tighten the mounting hardware.



5 Install the brake caliper on the Defender RoadLoK mounting holes.



6 Use the stock caliper mounting hardware to hold the caliper in place.



7 Tighten the caliper hardware.



8 Using one of the supplied keys, insert the locking pin through the Defender RoadLoK and one of the brake rotor holes. This prevents rotor movement.



9 The Jaybrake Defender RoadLoK is now in the locked position, and so the front wheel cannot roll. The yellow flag on the RoadLoK pin tells any potential bike thief that the bike is locked.

Jaybrake

716.592.0554  
www.jbrake.com

RoadLoK

845.343.5191  
www.roadlok.com